

PRODUCT INFORMATION PACKET

Model No: 182TTFB6013

Catalog No: GT3509

3 HP Close-Coupled Pump Motor, 3 phase, 3600 RPM, 575 V, 182JP Frame, TEFC
JP Motors



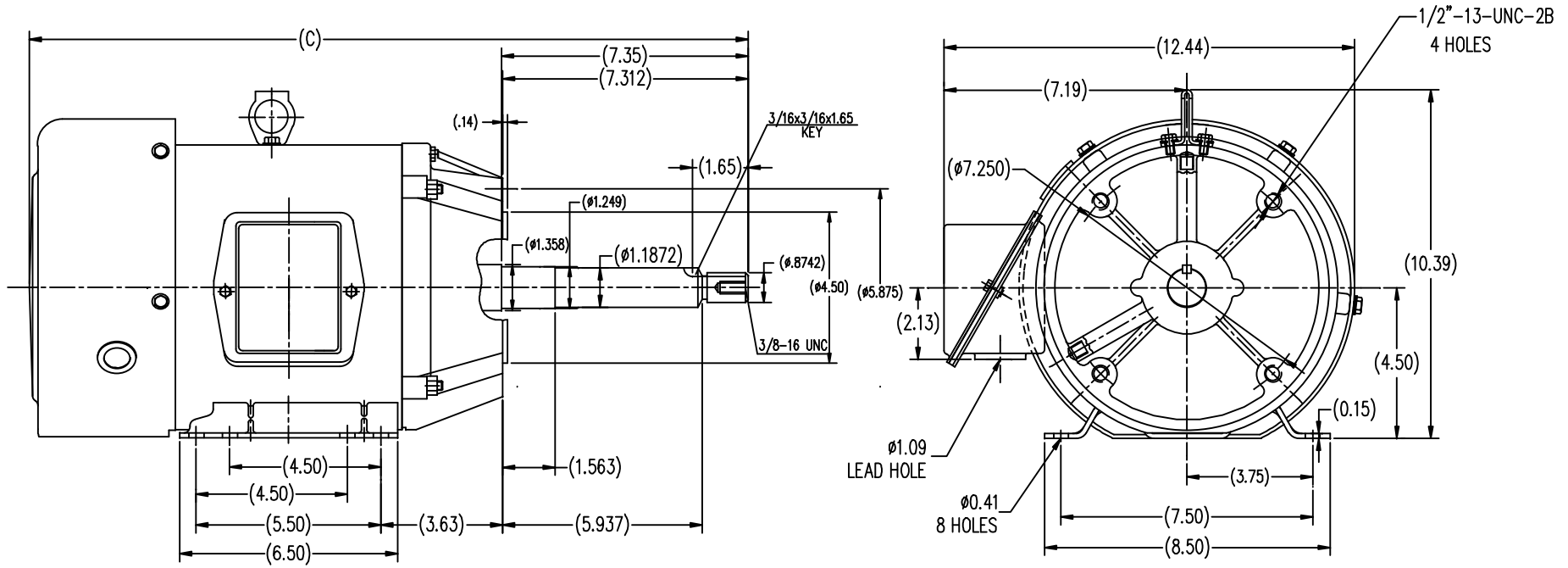
Nameplate Specifications

Output HP	3 Hp	Output KW	2.2 kW
Frequency	60 Hz	Voltage	575 V
Current	3.2 A	Speed	3505 rpm
Service Factor	1.15	Phase	3
Efficiency	86.5 %	Power Factor	86
Duty	Continuous	Insulation Class	F
Design Code	B	KVA Code	H
Frame	182JP	Enclosure	Totally Enclosed Fan Cooled
Thermal Protection	No	Ambient Temperature	40 °C
Drive End Bearing Size	6206	Opp Drive End Bearing Size	6205
UL	Recognized	CSA	Y
CE	Y	IP Code	43

Technical Specifications

Electrical Type	Squirrel Cage Inverter Rated	Starting Method	Line Or Inverter
Poles	2	Rotation	Reversible
Resistance Main	3.45 Ohms	Mounting	Rigid Base
Motor Orientation	Horizontal	Drive End Bearing	Ball
Opp Drive End Bearing	Ball	Frame Material	Rolled Steel
Shaft Type	JP	Overall Length	19.07 in
Frame Length	11.41 in	Shaft Diameter	0.874 in
Shaft Extension	5.937 in	Assembly/Box Mounting	F1/F2 CAPABLE
Connection Drawing	EE7300	Outline Drawing	SS620562-182TC

This is an uncontrolled document once printed or downloaded and is subject to change without notice. Date Created:20/01/2021



TIFB 182TC	19.067
TIFB 184TC	20.047
FRAME	C

TOLERANCES UNLESS SPECIFIED		REGAL-BELOIT CORPORATION		DRAWN ZXC 5-21-2012	
DEC.	INCHES	REGAL-BELOIT CORPORATION		CHK	
.X	±.1	TITLE		APPD	
.XX	±.03	TEFC-182/184JP-FR-ROLLED STEEL		SCALE	1=4
.XXX	±.005	MAT'L.		REF	
.XXXX	±.0005	FINISH		FMF	HWADA
NO.	REVISION	BY & DATE	CHK	ANG	PREV
THIS DRAWING IN DESIGN AND DETAIL IS OUR PROPERTY AND MUST NOT BE USED EXCEPT IN CONNECTION WITH OUR WORK ALL RIGHTS OF DESIGN AND INVENTION ARE RESERVED THIS IS AN ELECTRONICALLY GENERATED DOCUMENT - DO NOT SCALE THIS PRINT			RFP	CAD FILE	SS620562
			DIST	SIZE	B
			DRAWING NO.		SS620562
			REV.		

**THREE PHASE - SINGLE VOLTAGE
MOTOR - CONDUIT BOX @ 'A'**

**TO REVERSE ROTATION:
INTERCHANGE ANY TWO
LINE LEAD CONNECTIONS.**

TERMINAL BLOCK WHEN SPECIFIED



VIEW OF TERMINAL END

**IF MOTOR HAS
6 LEADS**



A-9806 DECAL

**OPTIONAL CORD
CONNECTION**

- L1 _____ WHITE
- L2 _____ RED
- L3 _____ BLACK

DRAWING REVISION AB	REVISION BY JJB	DATE 06-27-2017
ECO ECO-0125361	APPROVED BY TB	DATE 06-27-2017
ECO DESCRIPTION UPDATED TO CURRENT STANDARDS		
<small>COPYRIGHT REGAL BELOIT AMERICA, INC. ALL RIGHTS RESERVED. PROPRIETARY AND CONFIDENTIAL INFORMATION - THIS DOCUMENT IS THE PROPERTY OF REGAL BELOIT AMERICA, INC. ("OWNER") AND CONTAINS OWNER'S PROPRIETARY INFORMATION. ANY PERSON, CORPORATION OR OTHER FIRM RECEIVING IT IS DEEMED, BY RECEIVING IT, TO AGREE THAT IT, AND/OR ANY PART OF IT, SHALL NOT BE DISCLOSED TO ANY PERSON, CORPORATION OR OTHER ENTITY, DUPLICATED, AND/OR USED, EXCEPT AS EXPRESSLY APPROVED IN WRITING IN ADVANCE BY OWNER. THIS DOCUMENT SHALL BE RETURNED TO OWNER UPON REQUEST. IT MAY BE SUBJECT TO CERTAIN RESTRICTIONS UNDER APPLICABLE EXPORT CONTROL LAWS AND REGULATIONS.</small>		



DRAWN BY DA
DATE 03-26-1993
APPROVED BY TB
DATE 03-26-1993
REFERENCE
THIRD ANGLE PROJECTION

Regal Beloit America, Inc.		
		DESCRIPTION CONNECTION DIAGRAM EXTERNAL - SINGLE VOLTAGE - 3Ø MOTOR
MATERIAL	PROCESS/FINISH	
SIZE A	DRAWING NUMBER EE7300	SHEET 1 OF 1



P.O. BOX 8003
WAUSAU, WI 54401-8003
PH. 715-675-3311

DATA VOLTS: 460

CERTIFICATION DATA SHEET

CUSTOMER P.O. #:
 ORDER #: EE7300
 REFERENCE MODEL #: 182TTFB6013
 CONN. DIAGRAM: SS620562
 CAT #: GT3509
 OUTLINE: CHT18220005
 CUSTOMER PART #:
 WINDING: NONE 3
 MOUNTING: F1/F2 CAPABLE
 SPEED:
 TYPICAL MOTOR PERFORMANCE DATA

HP	KW	SYNC RPM	FL RPM	FRAME	ENCLOSURE	TYPE	KVA CODE	DESIGN
3	2.2	3600	3532	182JP	TEFC	TFC	L	A
PH	HZ	VOLTS	AMPS	START TYPE	DUTY	INSL	S.F.	AMB
3	60	575	2.9	LINE OR INVERTER	CONT	F	1.15	40
								ELEV.
								3300
	F.L. EFF	86.5	3/4 LD EFF	85.5	1/2 LD EFF	84.0	GTD EFF	ELECT. TYPE
	F.L. PF	86.0	3/4 LD PF	81.0	1/2 LD PF	71.0	85.5	SO GAGE INVERTED
	F.L. TORQUE	LR AMPS @ 460 V	LR TORQUE	B.D. TORQUE	F.L. RISE (°C)			
	4.5 LB-FT	20.0	8.1 LB-FT	180%	13.8 LB-FT	307%	55	
	@ 3 FT.	POWER	ROTOR WK²	MAX. LOAD WK²	SAFE STALL TIME	STARTS/HOUR	MOTOR WGT	
	72 DBA	81 DBA	0.20 LB-FT²	34 LB-FT²	25 SEC.	2	70 LB.	

*** SUPPLEMENTAL INFORMATION ***

DE BRACKET TYPE	ODE BRACKET TYPE	MOUNT TYPE	MOTOR ORIENTATION	SEVERE DUTY	HAZARDOUS LOCATION	DRIP COVER	SCREENS	PAINT
C-FACE	STANDARD	RIGID	HORIZONTAL	NO	NONE	NO	NONE	BLUE (ENAMEL)
BEARINGS	GREASE	SHAFT TYPE	SPECIAL DE	SPECIAL ODE	SHAFT MATERIAL	FRAME MATERIAL		
DE BALL 6206	BALL POLYREX EM 6205	JP	NONE	NONE	1045 HOT ROLLED (C-204)	ROLLED STEEL		

THERMOSTATS	PROTECTORS	WDG RTD's	BRG RTD's	THERMISTORS	CONTROL	SPACE HEATERS
NONE	NOT	NONE	NONE	NONE	FALSE	NA
R1 (ohms/ph)	R2 (ohms/ph)	X1 (ohms/ph)	X2 (ohms/ph)	Xm (ohms/ph)	VIBRATION (in/sec)	FLOAT
3.252	2.291	7.391	3.326	272.714	0.150	ODE

INVERTER TORQUE: VARIABLE 10:1
 INV. HP SPEED RANGE: NONE

ENCODER: NONE	BRAKE: NONE	NONE
NONE	NONE	NONE
NONE	NONE	NONE
NONE	NONE	NONE
NONE	NONE	NONE
NONE	NONE	NONE
NONE	NONE	NONE
NONE	NONE	NONE
NONE	NONE	NONE
NONE	NONE	NONE

PREPARED BY: FAREEDA DUDEKULA
 DATE: 5/3/2018

FORM: 3531 REV 4 2/27/06

UL: V-INS, CONST UL REC & CUL REC
 FT-LB: NA
 VOLTAGE: NONE
 HZ:

Data Sheet

Date: 5/3/2018

1821TTEB013

Customer: _____
 Attention: _____
 Submitted by: FAREEDA DUDEKULA



Submital
 Data @ 575 V

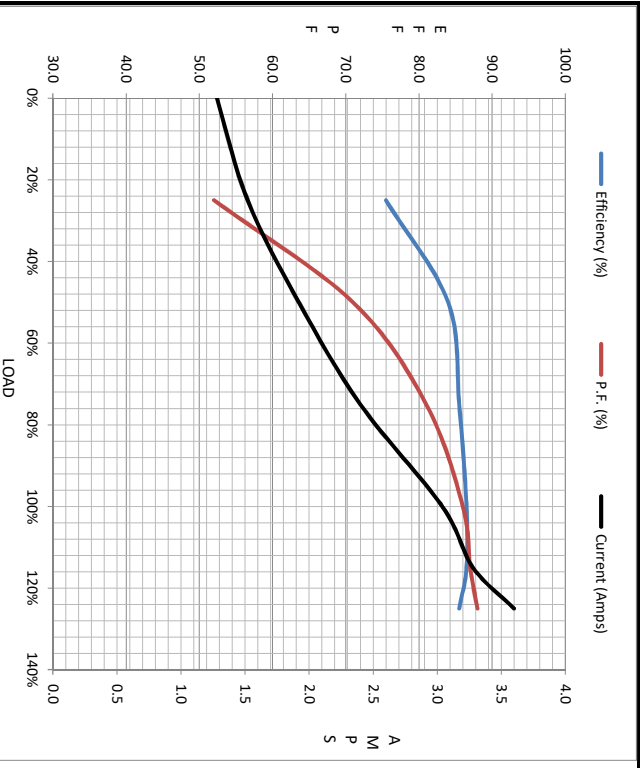
Load	0%	25%	50%	75%	100%	115%	125%	LR
Current (Amps)	1.28	1.52	1.92	2.40	3.0	3.3	3.6	20.0
Torque (ft-lb)	0.00	1.10	2.20	3.3	4.5	5.1	5.6	8.1
RPM	3600	3575	3555	3540	3532	3,520	3505	0
Efficiency (%)		75.5	84.0	85.5	86.5	86.5	85.5	
P.F. (%)	9.0	52.0	71.0	81.0	86.0	87.0	88.0	49.0

Motor Speed Data

	LR	Pull-Up	BD	Rated	Idle
Speed (RPM)	0	1800	2850	3532	3600
Current (Amps)	20.0	17.6	14.0	3.0	1.28
Torque (ft-lb)	8.1	7.0	13.8	4.5	0.00

Information Block

HP	3.0			
Sync. RPM	3600			
Frame	182182TTEC6080			
Enclosure	TFC			
Construction	TFC			
Voltage	575 V			
Frequency	60 Hz			
Design	B			
LR Code letter	L			
Service Factor	1.15			
Temp Rise @ FL	55 °C			
Duty	CONT			
Ambient	40 °C			
Elevation	1,000 feet			
Rotor/Shaft wk ²	0.20 Lb-Ft ²			
Ret Wdg	CHT18220005 NONE			
Sound Pressure @ 1M	72 dbA			
VFD Rating	VARIABLE 10:1			
Outline Dwg	SS620562			
Conn. Diag	EE7300			
Additional Specifications:				
0				
0				
R1	R2	X1	X2	Xm
3.2520	2.2910	7.3910	3.3260	272.7140



Speed - Torque Curve

